

# CURALYMPH COMFORT (Not medical grade)

For Mild (Stage 1) Lymphedema  
Daily or occasional support as needed

amoena

# CURALYMPH COMFORT (Not medical grade)

For Mild (Stage 1) Lymphedema  
Daily or occasional support as needed

amoena

## LINDA Soft Cup

**Style**  
44811 Sand

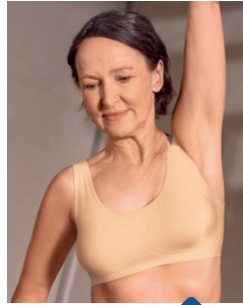
**Sizes**  
S, M, L, XL,  
2XL, 3XL

**Material**  
67% Nylon,  
33% Spandex



### Features

- Innovative bonding technology with integrated cup pockets
- Flat seams avoid digging into the skin and interfering with lymphatic drainage
- Wide shoulder straps avoid digging into the skin
- Innovative SensElast® technology on side panels creates a light massage effect in combination with movement



SensElast® is an innovative 3D technology that joins materials together without seams.

## LINDA Soft Cup

**Style**  
44811 Sand

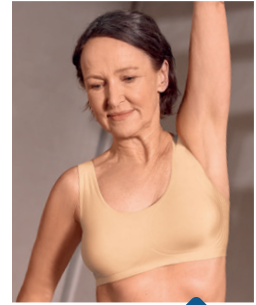
**Sizes**  
S, M, L, XL,  
2XL, 3XL

**Material**  
67% Nylon,  
33% Spandex



### Features

- Innovative bonding technology with integrated cup pockets
- Flat seams avoid digging into the skin and interfering with lymphatic drainage
- Wide shoulder straps avoid digging into the skin
- Innovative SensElast® technology on side panels creates a light massage effect in combination with movement



SensElast® is an innovative 3D technology that joins materials together without seams.

Medical Device Classification according to MDR 2017/745: Class 1

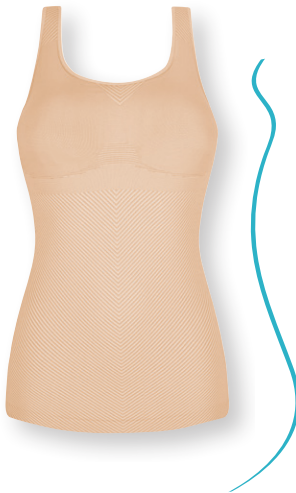
Medical Device Classification according to MDR 2017/745: Class 1

## LIANE TOP

**Style**  
44812 Sand/  
Light Sand

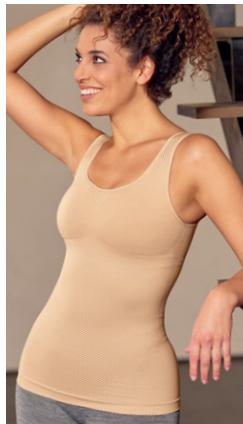
**Sizes**  
S, M, L, XL,  
2XL, 3XL

**Material**  
56% Nylon,  
36% Polyester,  
8% Spandex



### Features

- Wide, padded shoulder straps and wide integrated bra band provide comfort, relief of shoulders, and avoids cutting into the skin so as not to impede lymphatic drainage
- Comfortable, light shaping effect for women with mild or light edema
- Structured material gives a light massage effect
- Integrated cup pockets hold breast forms and shapers in place
- Hip length top is ideal for physical activities or sleeping



2033 Mount Forest Drive  
Burlington ON

Appointments are preferred:  
Call 289-337-1508 or shop online  
at [bodymedboutique.ca](http://bodymedboutique.ca)

## LIANE TOP

**Style**  
44812 Sand/  
Light Sand

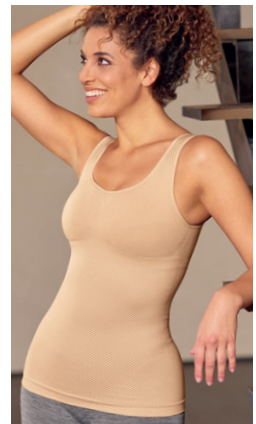
**Sizes**  
S, M, L, XL,  
2XL, 3XL

**Material**  
56% Nylon,  
36% Polyester,  
8% Spandex



### Features

- Wide, padded shoulder straps and wide integrated bra band provide comfort, relief of shoulders, and avoids cutting into the skin so as not to impede lymphatic drainage
- Comfortable, light shaping effect for women with mild or light edema
- Structured material gives a light massage effect
- Integrated cup pockets hold breast forms and shapers in place
- Hip length top is ideal for physical activities or sleeping



2033 Mount Forest Drive  
Burlington ON

Appointments are preferred:  
Call 289-337-1508 or shop online  
at [bodymedboutique.ca](http://bodymedboutique.ca)

# AMOENA MEDICAL GRADE

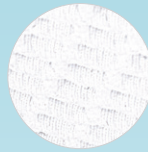
amoena

For Stage 2 and 3 Lymphedema

## LYMPH FLOW LONG

Soft Cup Front Closure

Styles	Sizes	Material
44813 White 44815 Black	S, M, L, XL, 2XL	89% Nylon, 11% Spandex



Textured material



### Features

- Wide adjustable straps and wide integrated bra band prevent digging into the skin and interfering with lymphatic drainage
- Medically effective pressure: 15-18 mmHg
- Textured material provides a massaging and draining effect
- Long length fit with knitted underbust elastic band

## LYMPH FLOW

Soft Cup Front Closure

Styles	Sizes	Material
44814 White 44816 Black	S, M, L, XL, 2XL, 3XL	50% Nylon, 38% Silicone, 11% Spandex, 1% Polypropylene



Innovative 3D bonding technology



### Features

- Innovative bonding technology: flat seams avoid digging into the skin and interfering with lymphatic drainage
- Wide shoulder straps avoid digging into the skin
- Medically effective pressure: 18-21 mmHg
- Innovative SensElast® technology on rear and side panels creates a light massage effect in combination with movement

## LYMPH FLOW PRESSURE PAD

Style	Size	Material
020 Clear	100 x 110 mm 3.9" x 4.3"	90% Polydimethylsiloxane, 10% Polyurethane



### Features

- Silicone pad, ideal as an insert into the garment, increasing pressure at the area of the edema
- Textured surface for a light massage effect, supports the loosening of fibrous tissue as well as a light massage of the scars
- Washable and reusable



2033 Mount Forest Drive  
Burlington ON

# AMOENA MEDICAL GRADE

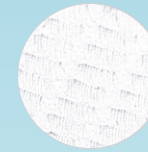
amoena

For Stage 2 and 3 Lymphedema

## LYMPH FLOW LONG

Soft Cup Front Closure

Styles	Sizes	Material
44813 White 44815 Black	S, M, L, XL, 2XL	89% Nylon, 11% Spandex



Textured material



### Features

- Wide adjustable straps and wide integrated bra band prevent digging into the skin and interfering with lymphatic drainage
- Medically effective pressure: 15-18 mmHg
- Textured material provides a massaging and draining effect
- Long length fit with knitted underbust elastic band

## LYMPH FLOW

Soft Cup Front Closure

Styles	Sizes	Material
44814 White 44816 Black	S, M, L, XL, 2XL, 3XL	50% Nylon, 38% Silicone, 11% Spandex, 1% Polypropylene



Innovative 3D bonding technology



### Features

- Innovative bonding technology: flat seams avoid digging into the skin and interfering with lymphatic drainage
- Wide shoulder straps avoid digging into the skin
- Medically effective pressure: 18-21 mmHg
- Innovative SensElast® technology on rear and side panels creates a light massage effect in combination with movement

## LYMPH FLOW PRESSURE PAD

Style	Size	Material
020 Clear	100 x 110 mm 3.9" x 4.3"	90% Polydimethylsiloxane, 10% Polyurethane



### Features

- Silicone pad, ideal as an insert into the garment, increasing pressure at the area of the edema
- Textured surface for a light massage effect, supports the loosening of fibrous tissue as well as a light massage of the scars
- Washable and reusable



2033 Mount Forest Drive  
Burlington ON